

# District V High School Scales

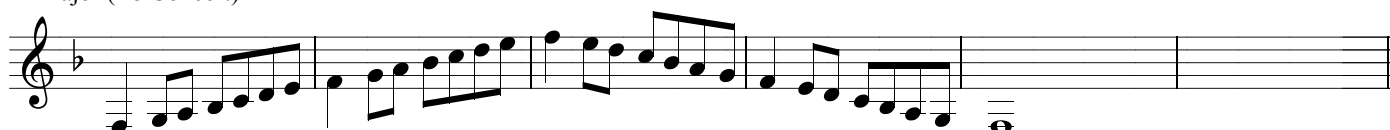
♩ = 100

**Bb Bass Clarinet**

C Major (Bb Concert)



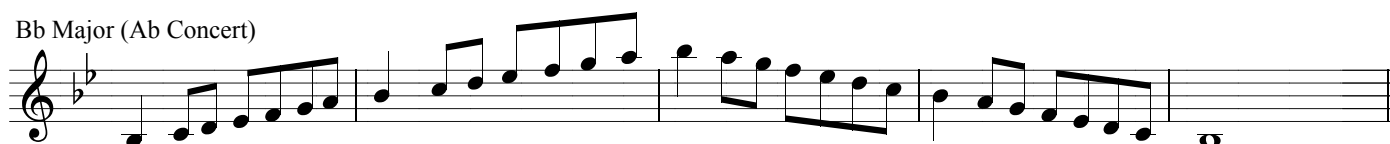
F Major (Eb Concert)



G Major (F Concert)



Bb Major (Ab Concert)



D Major (C Concert)



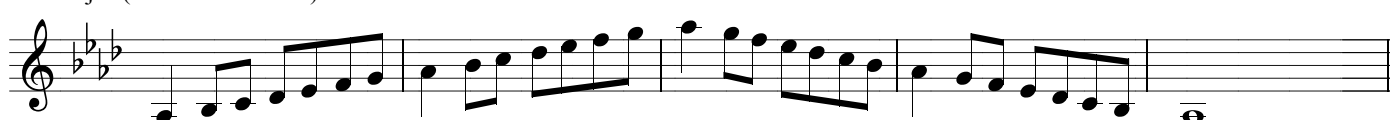
Eb Major (Db Concert)



A Major (G Concert)



Ab Major (Gb or F# Concert)



E Major (D Concert)



Db Major (Cb or B Concert) (2nd Octave Opt.)

Musical notation for the Db Major scale (Cb or B Concert) in treble clef. The key signature has five flats (Bb, Eb, Ab, Db, Gb). The scale is written in a 2nd octave option. It consists of eight measures of music, each containing a half note followed by an eighth note pair, with a final whole note at the end.

B Major (A Concert)

Musical notation for the B Major scale (A Concert) in treble clef. The key signature has two sharps (F#, C#). The scale is written in a 2nd octave option. It consists of eight measures of music, each containing a half note followed by an eighth note pair, with a final whole note at the end.

Gb Major (E Concert)

Musical notation for the Gb Major scale (E Concert) in treble clef. The key signature has five flats (Bb, Eb, Ab, Db, Gb). The scale is written in a 2nd octave option. It consists of eight measures of music, each containing a half note followed by an eighth note pair, with a final whole note at the end.

F# Major (E Concert)

Musical notation for the F# Major scale (E Concert) in treble clef. The key signature has three sharps (F#, C#, G#). The scale is written in a 2nd octave option. It consists of eight measures of music, each containing a half note followed by an eighth note pair, with a final whole note at the end.

Cb Major (A Concert)

Musical notation for the Cb Major scale (A Concert) in treble clef. The key signature has six flats (Bb, Eb, Ab, Db, Gb, Cb). The scale is written in a 2nd octave option. It consists of eight measures of music, each containing a half note followed by an eighth note pair, with a final whole note at the end.

C# Major (B Concert)

Musical notation for the C# Major scale (B Concert) in treble clef. The key signature has four sharps (F#, C#, G#, D#). The scale is written in a 2nd octave option. It consists of eight measures of music, each containing a half note followed by an eighth note pair, with a final whole note at the end.

Chromatic Scale ♩ = 120

Musical notation for the Chromatic Scale in treble clef, 2/4 time signature. The tempo is marked ♩ = 120. The scale is written in a 2nd octave option. It consists of three staves of music, each containing a half note followed by an eighth note pair, with a final whole note at the end.