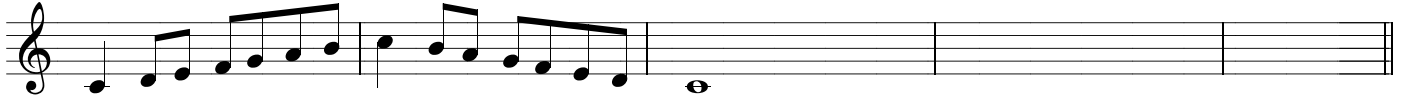


District V High School Scales

♩ = 100

Euphonium/Baritone T.C

C Major



F Major



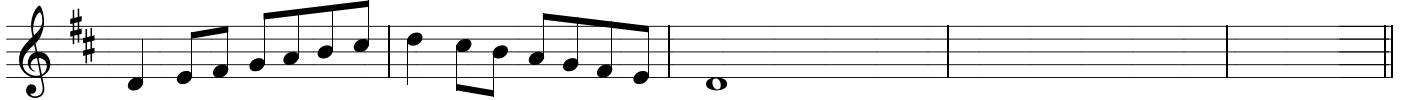
G Major



Bb Major



D Major



Eb Major



A Major



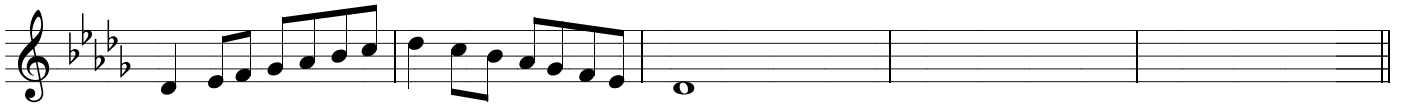
Ab Major



E Major



Db Major



Musical notation for the Db Major scale, starting on the first line of the treble clef. The key signature has three flats (Bb, Eb, Ab). The scale is written in a single line with a final whole note on the first line.

B Major



Musical notation for the B Major scale, starting on the first line of the treble clef. The key signature has two sharps (F#, C#). The scale is written in a single line with a final whole note on the first line.

Gb Major



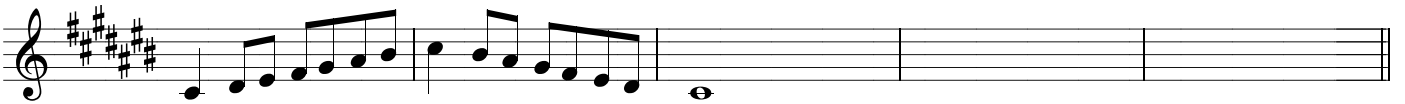
Musical notation for the Gb Major scale, starting on the first line of the treble clef. The key signature has three flats (Bb, Eb, Ab). The scale is written in a single line with a final whole note on the first line.

F# Major



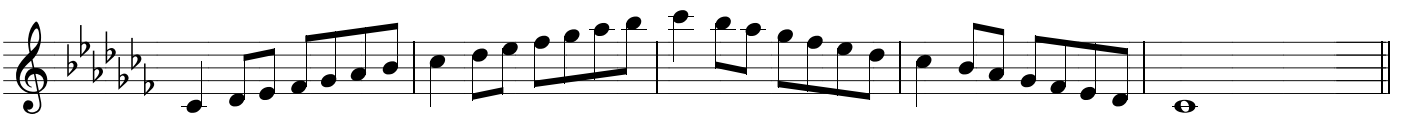
Musical notation for the F# Major scale, starting on the first line of the treble clef. The key signature has three sharps (F#, C#, G#). The scale is written in a single line with a final whole note on the first line.

C# Major



Musical notation for the C# Major scale, starting on the first line of the treble clef. The key signature has four sharps (F#, C#, G#, D#). The scale is written in a single line with a final whole note on the first line.

Cb Major



Musical notation for the Cb Major scale, starting on the first line of the treble clef. The key signature has four flats (Bb, Eb, Ab, Db). The scale is written in a single line with a final whole note on the first line.

Chromatic Scale ♩ = 120



Musical notation for the ascending chromatic scale, starting on the first line of the treble clef. The key signature has three sharps (F#, C#, G#). The scale is written in a single line with a slur over the notes and a final whole note on the first line.



Musical notation for the descending chromatic scale, starting on the first line of the treble clef. The key signature has three sharps (F#, C#, G#). The scale is written in a single line with a slur over the notes and a final whole note on the first line.