

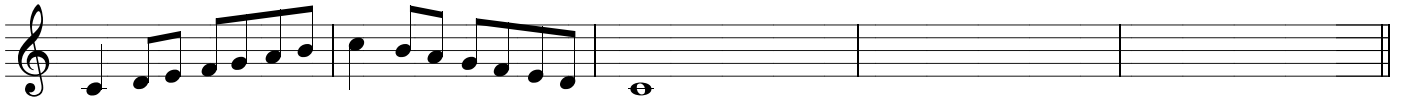
# District V High School Scales

♩ = 100

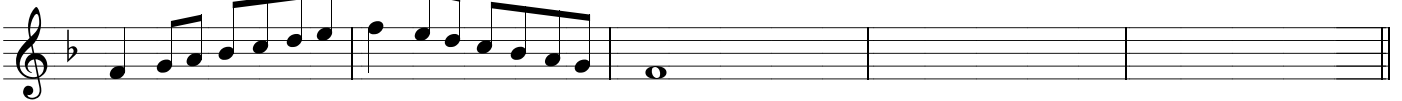
Each scale performed in as many octaves as the instrument will allow

**Mallets**

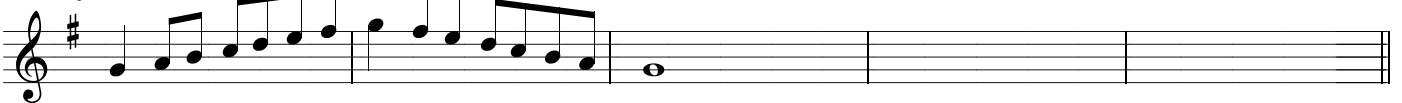
C Major Scale



F Major Scale



G Major Scale



Bb Major Scale



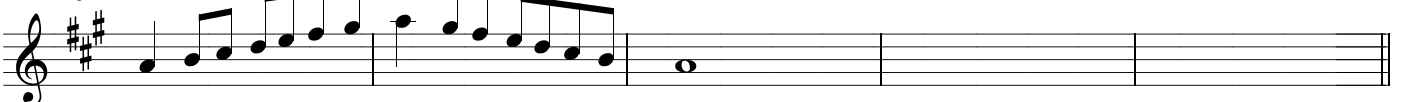
D Major Scale



Eb Major Scale



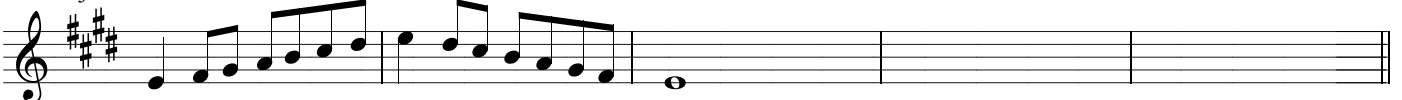
A Major Scale



Ab Major Scale



E Major Scale

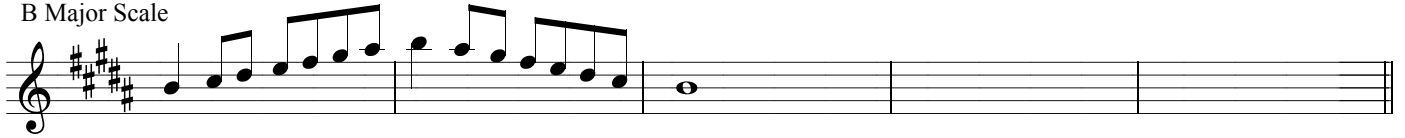


Db Major Scale



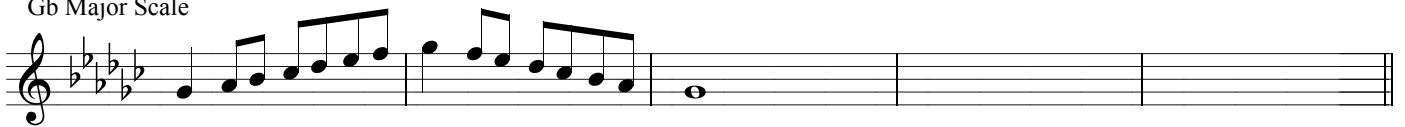
Musical notation for the Db Major Scale, starting on D-flat. The scale is written in treble clef with a key signature of three flats (Bb, Eb, Ab). It consists of two ascending lines of eighth notes and a final whole note D-flat.

B Major Scale



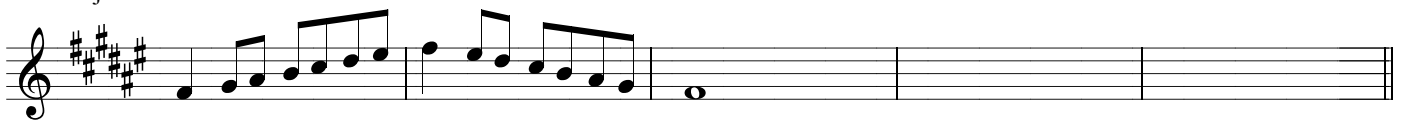
Musical notation for the B Major Scale, starting on B. The scale is written in treble clef with a key signature of two sharps (F#, C#). It consists of two ascending lines of eighth notes and a final whole note B.

Gb Major Scale



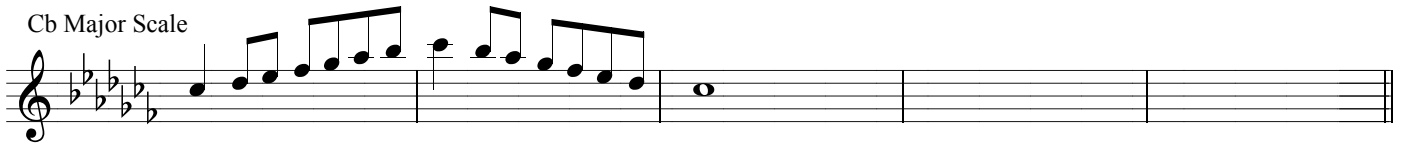
Musical notation for the Gb Major Scale, starting on G-flat. The scale is written in treble clef with a key signature of three flats (Bb, Eb, Ab). It consists of two ascending lines of eighth notes and a final whole note G-flat.

F# Major Scale



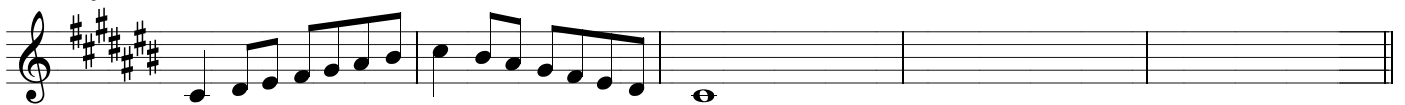
Musical notation for the F# Major Scale, starting on F-sharp. The scale is written in treble clef with a key signature of three sharps (F#, C#, G#). It consists of two ascending lines of eighth notes and a final whole note F-sharp.

Cb Major Scale




Musical notation for the Cb Major Scale, starting on C-flat. The scale is written in treble clef with a key signature of four flats (Bb, Eb, Ab, Db). It consists of two ascending lines of eighth notes and a final whole note C-flat.

C# Major Scale



Musical notation for the C# Major Scale, starting on C-sharp. The scale is written in treble clef with a key signature of four sharps (F#, C#, G#, D#). It consists of two ascending lines of eighth notes and a final whole note C-sharp.

Chromatic Scale ♩ = 120



Musical notation for the Chromatic Scale, starting on C. The scale is written in treble clef and consists of two lines of eighth notes, each line containing 12 notes (C to B natural and B natural to C). A slur covers the entire piece, and the tempo is marked as ♩ = 120.



Musical notation for the Chromatic Scale, starting on B. The scale is written in treble clef and consists of two lines of eighth notes, each line containing 12 notes (B to A-flat and A-flat to B). A slur covers the entire piece.