

District V High School Scales

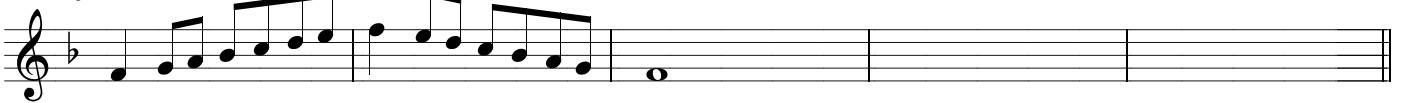
♩ = 100

Oboe

C Major Scale



F Major Scale



G Major Scale



Bb Major Scale



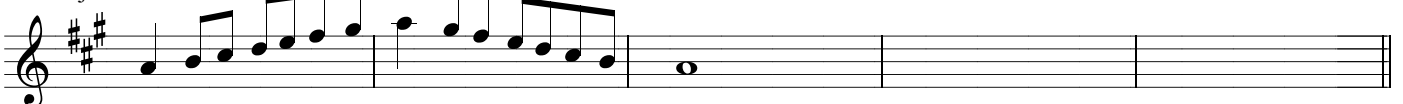
D Major Scale



Eb Major Scale



A Major Scale



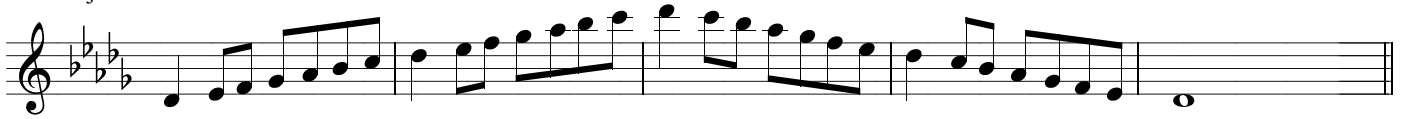
Ab Major Scale



E Major Scale

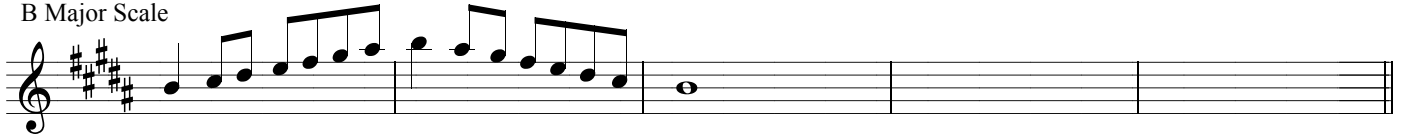


Db Major Scale



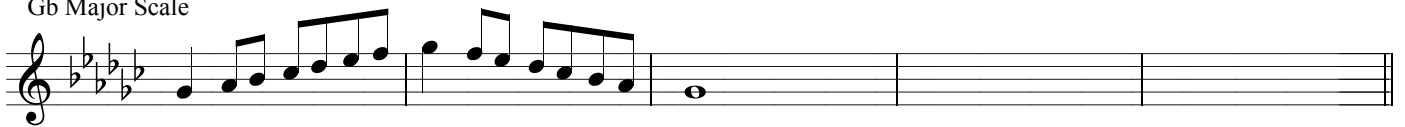
Musical notation for the Db Major Scale in treble clef. The key signature has three flats (Bb, Eb, Ab). The scale is written in quarter notes, ascending and then descending, ending with a whole note on the tonic (Db).

B Major Scale



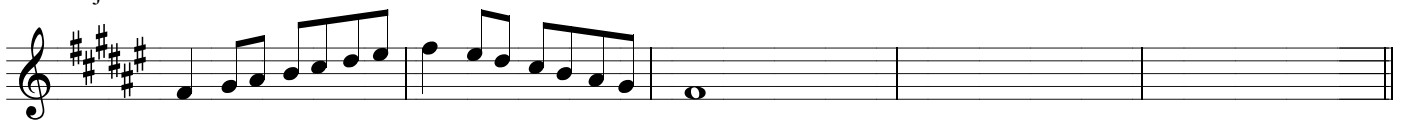
Musical notation for the B Major Scale in treble clef. The key signature has two sharps (F#, C#). The scale is written in quarter notes, ascending and then descending, ending with a whole note on the tonic (B).

Gb Major Scale



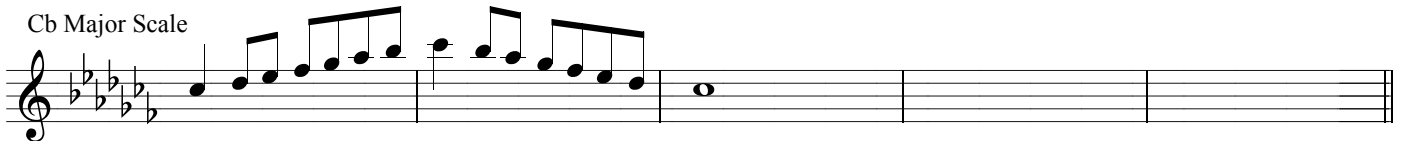
Musical notation for the Gb Major Scale in treble clef. The key signature has three flats (Bb, Eb, Ab). The scale is written in quarter notes, ascending and then descending, ending with a whole note on the tonic (Gb).

F# Major Scale



Musical notation for the F# Major Scale in treble clef. The key signature has three sharps (F#, C#, G#). The scale is written in quarter notes, ascending and then descending, ending with a whole note on the tonic (F#).

Cb Major Scale




Musical notation for the Cb Major Scale in treble clef. The key signature has four flats (Bb, Eb, Ab, Db). The scale is written in quarter notes, ascending and then descending, ending with a whole note on the tonic (Cb).

C# Major Scale



Musical notation for the C# Major Scale in treble clef. The key signature has four sharps (F#, C#, G#, D#). The scale is written in quarter notes, ascending and then descending, ending with a whole note on the tonic (C#).

Chromatic Scale ♩ = 120



Musical notation for the Chromatic Scale in treble clef. The scale is written in eighth notes, ascending and then descending, ending with a whole note on the tonic (C). A slur covers the entire scale.



Musical notation for the Chromatic Scale in treble clef. The scale is written in eighth notes, ascending and then descending, ending with a whole note on the tonic (C).