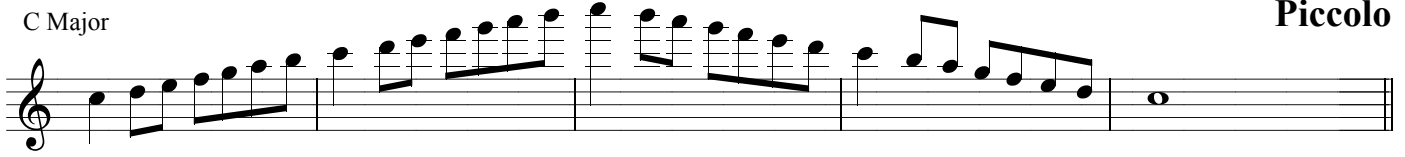


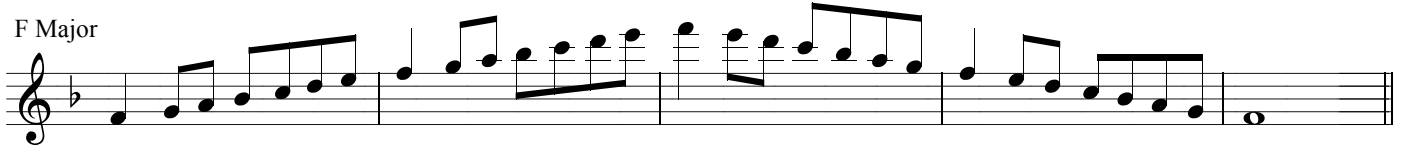
District V High School Scales

Piccolo

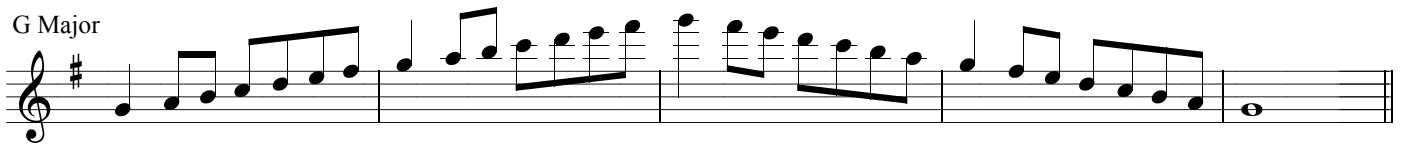
C Major



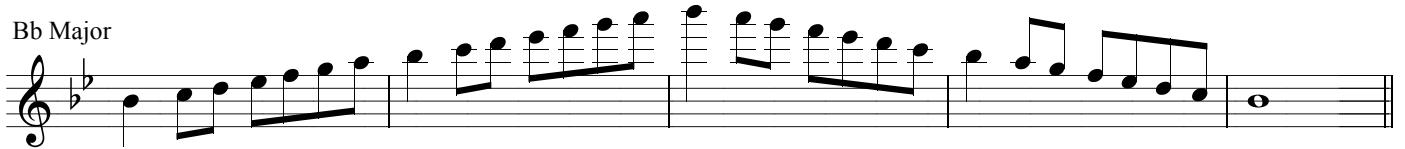
F Major



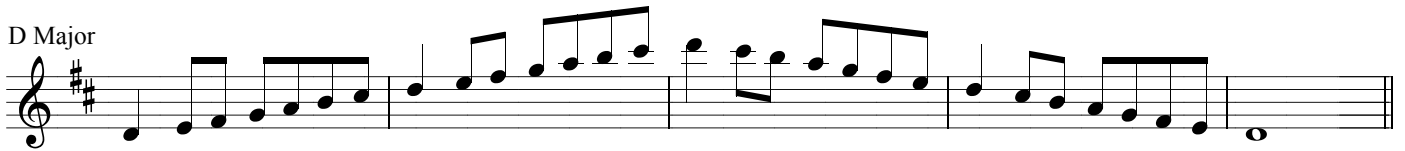
G Major



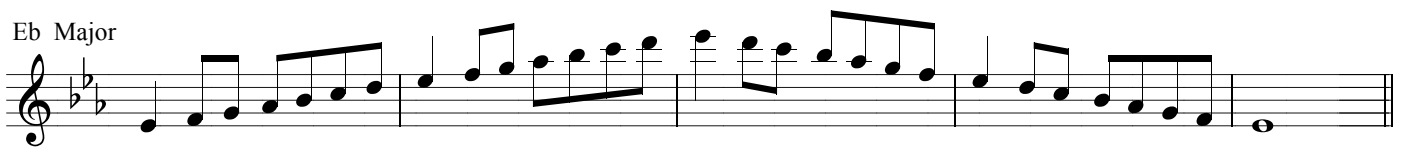
Bb Major



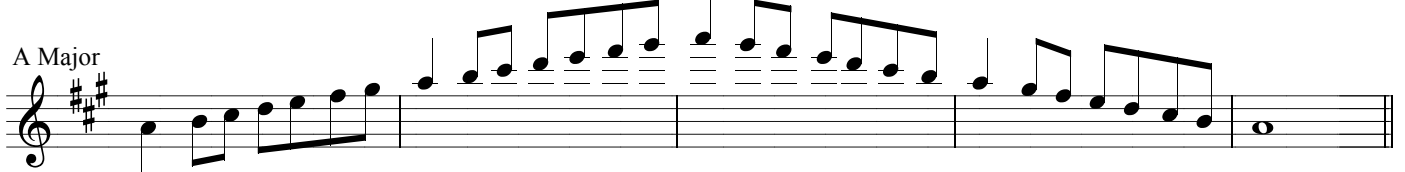
D Major



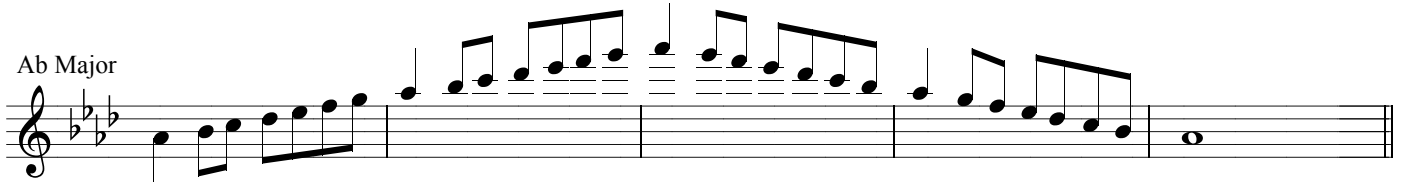
Eb Major



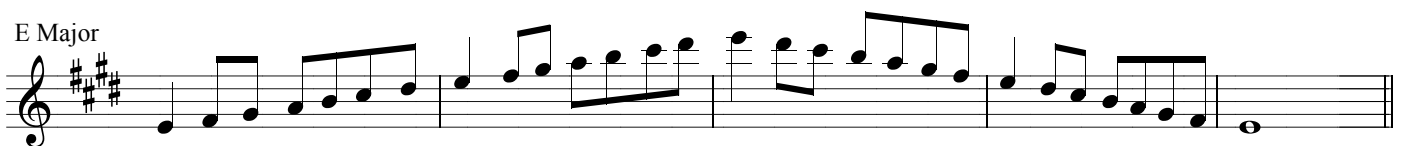
A Major



Ab Major



E Major



Db Major

Musical notation for the Db Major scale in treble clef. The key signature has five flats (Bb, Eb, Ab, Db, Gb). The scale is written in a single line, starting on a whole note and moving through eighth and sixteenth notes.

B Major

Musical notation for the B Major scale in treble clef. The key signature has two sharps (F#, C#). The scale is written in a single line, starting on a whole note and moving through eighth and sixteenth notes.

Gb Major

Musical notation for the Gb Major scale in treble clef. The key signature has six flats (Fb, Cb, Gb, Db, Ab, Eb). The scale is written in a single line, starting on a whole note and moving through eighth and sixteenth notes.

C# Major

F# Major

Musical notation for the F# Major scale in treble clef. The key signature has three sharps (F#, C#, G#). The scale is written in a single line, starting on a whole note and moving through eighth and sixteenth notes.

Cb Major

Musical notation for the Cb Major scale in treble clef. The key signature has seven flats (Bb, Eb, Ab, Db, Gb, Cb, Fb). The scale is written in a single line, starting on a whole note and moving through eighth and sixteenth notes.

Musical notation for the C# Major scale in treble clef. The key signature has three sharps (F#, C#, G#). The scale is written in a single line, starting on a whole note and moving through eighth and sixteenth notes.

Chromatic Scale ♩ = 120

Musical notation for the ascending chromatic scale in treble clef, 2/4 time signature. The tempo is marked as ♩ = 120. The scale is written in a single line, starting on a whole note and moving through eighth and sixteenth notes.

Musical notation for the descending chromatic scale in treble clef, 2/4 time signature. The scale is written in a single line, starting on a whole note and moving through eighth and sixteenth notes.

Musical notation for the descending chromatic scale in treble clef, 2/4 time signature. The scale is written in a single line, starting on a whole note and moving through eighth and sixteenth notes.